

EQUITABLE TRUST COMPANY MONTHLY

Published at Ninth and Market Streets, Wilmington, Delaware

VOLUME IV

OCTOBER, 1923

No. 3

Del.
HG

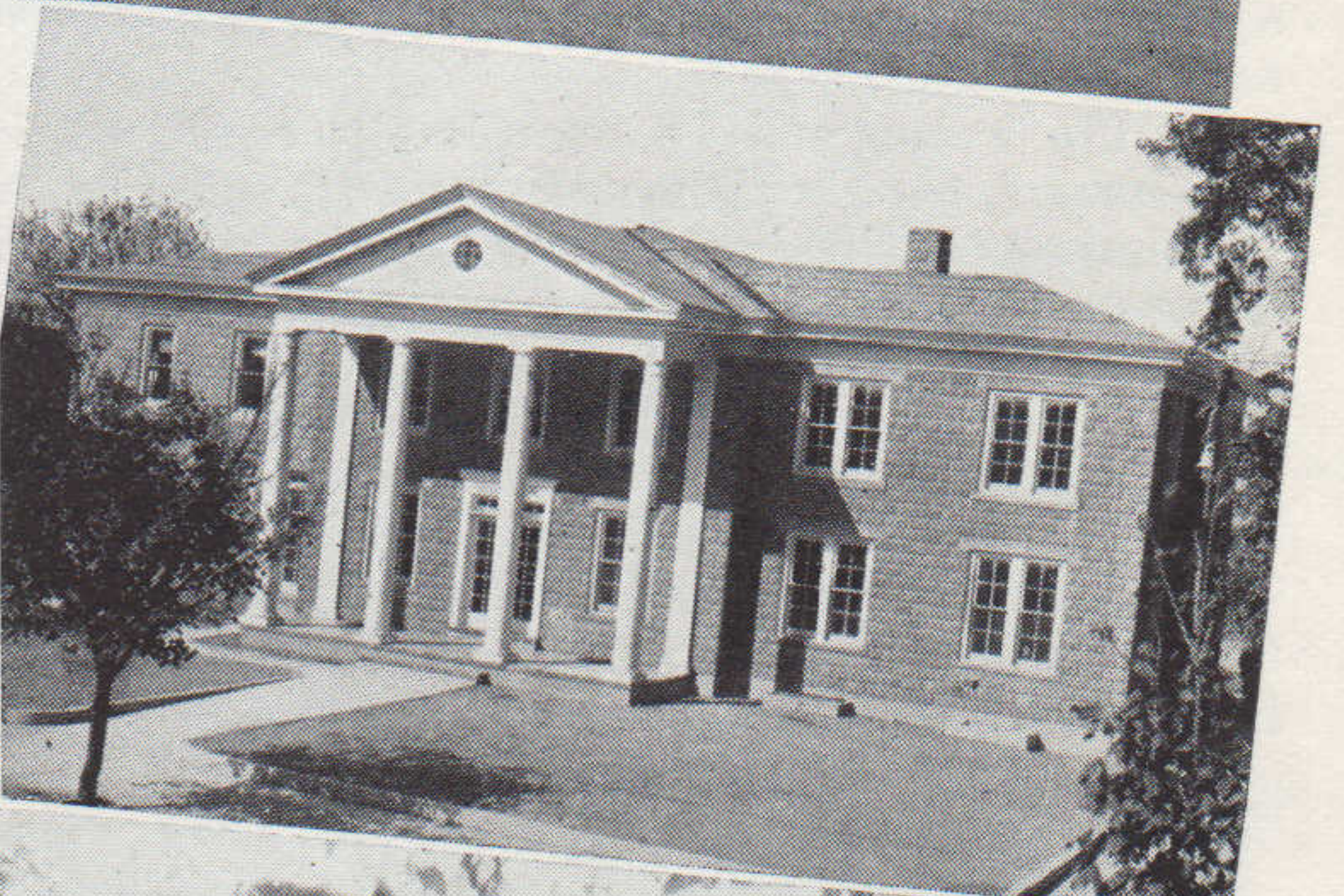
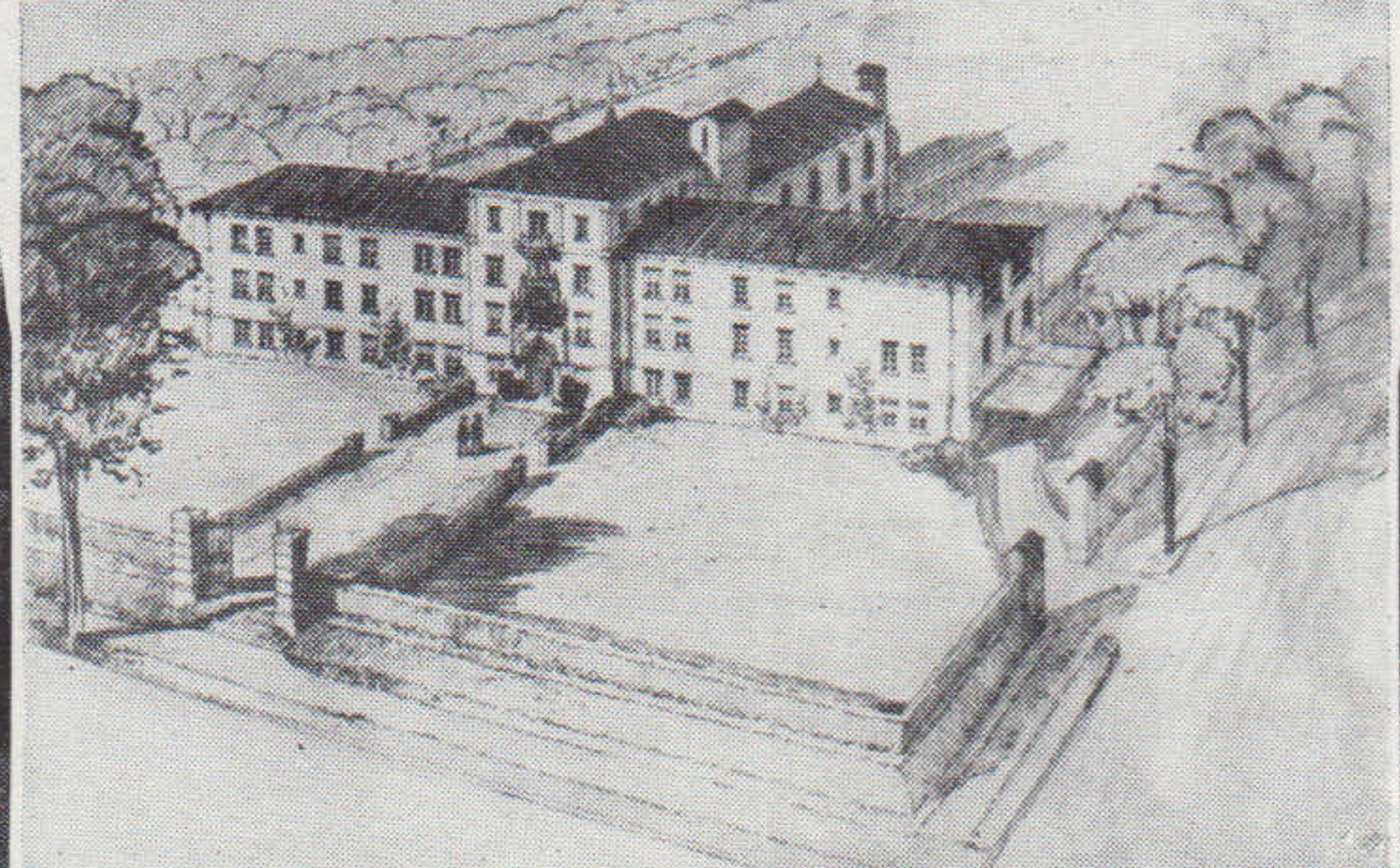
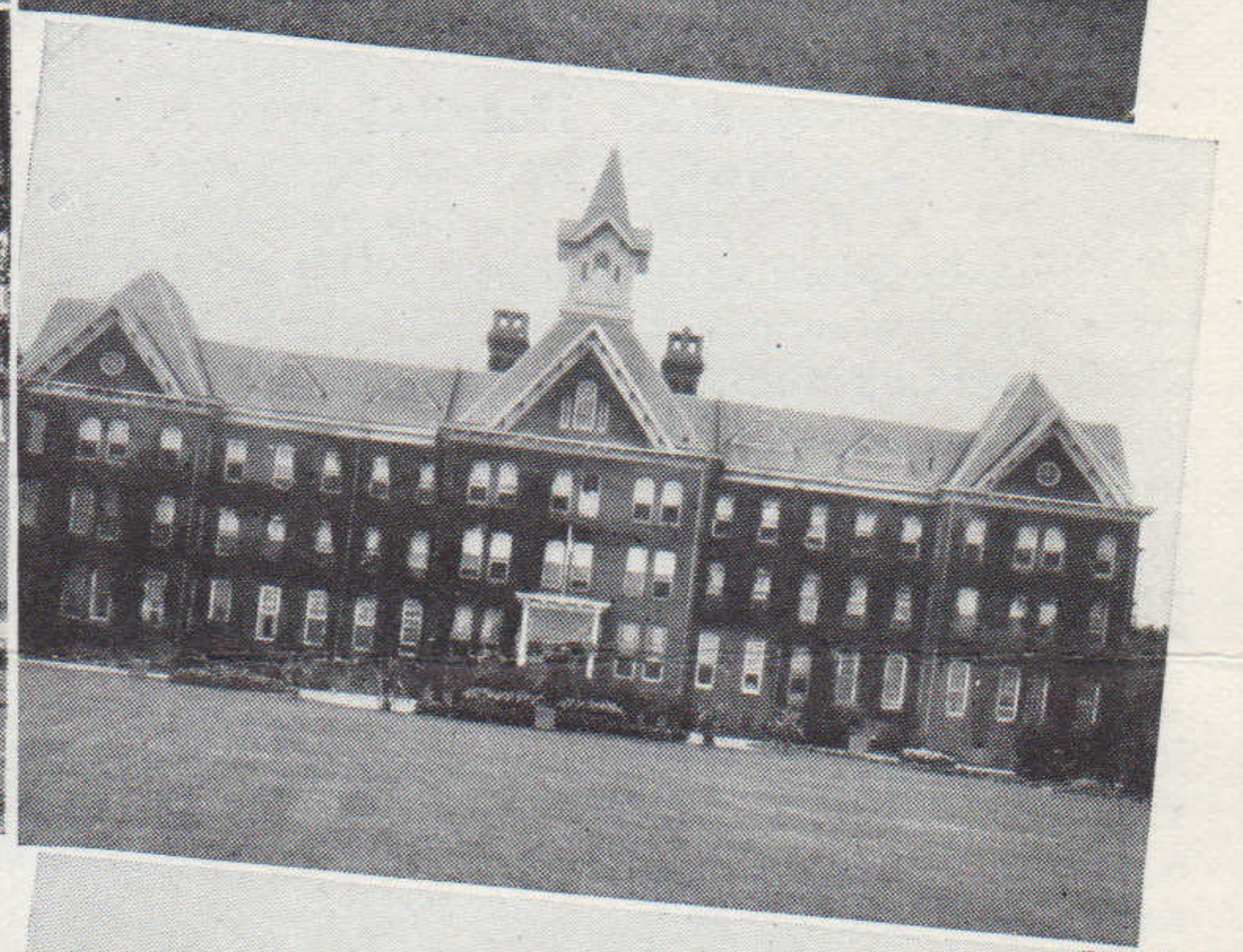
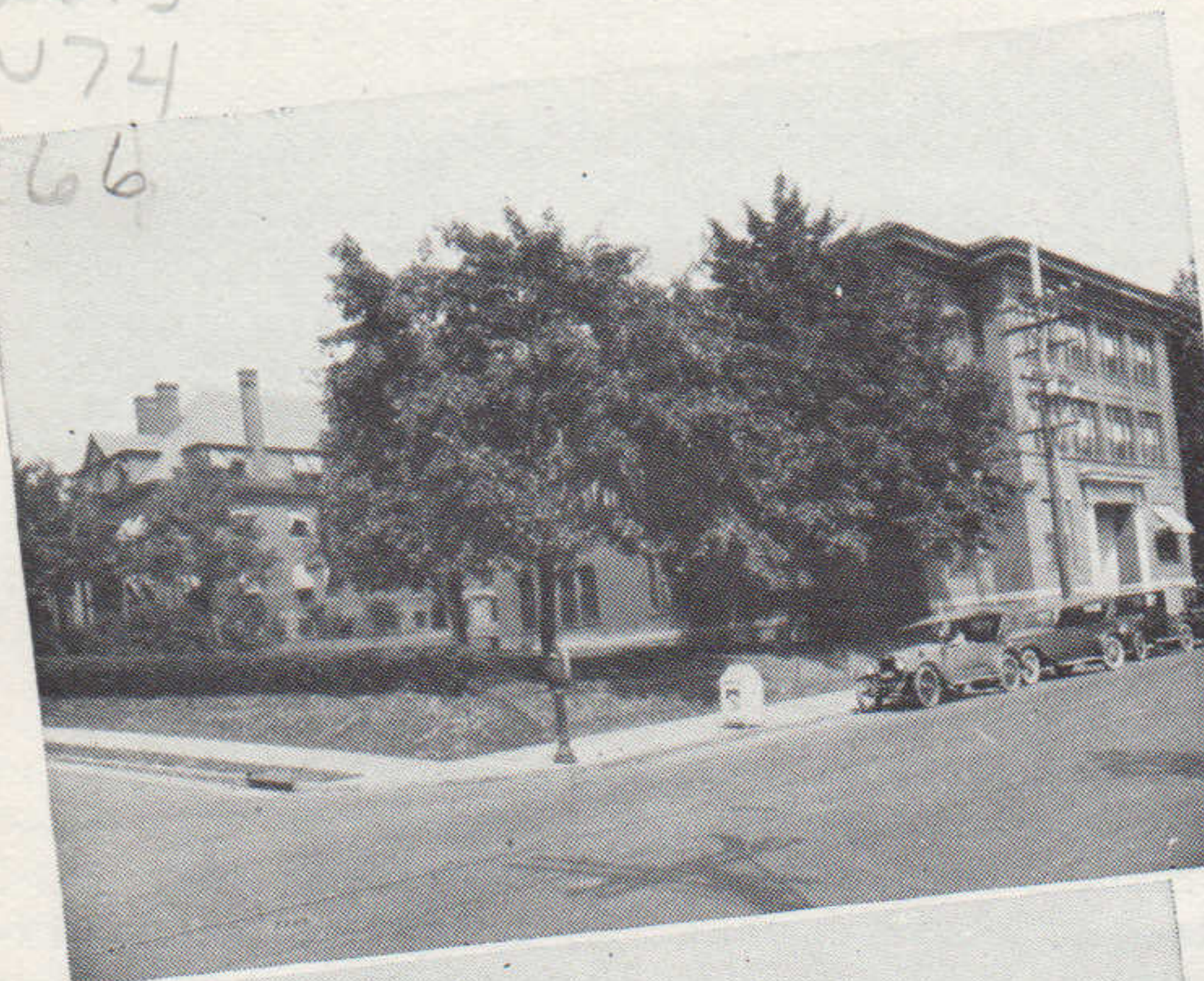
UNIVERSITY

WARE

MAR 29 1928

NEWARK, DELAWARE

2613
W74
E66



DELAWARE HOSPITAL
NEW CASTLE COUNTY HOSPITAL
MILFORD EMERGENCY HOSPITAL
PHYSICIANS' AND SURGEONS' HOSPITAL

HOMOEOPATHIC HOSPITAL
BABIES' HOSPITAL AND DAY NURSERY
SAINT FRANCIS HOSPITAL
BABIES' HOSPITAL AND DAY NURSERY
(FRENCH STREET)

BRANDYWINE SANITORIUM
DELAWARE STATE HOSPITAL
BEEBE HOSPITAL
PHYSICIANS' & SURGEONS' CONTAGIOUS HOSPITAL