



**HOMOEOPATHIC HOSPITAL**

vements being made this year, is the airway by enclosing it in wire-glass. The hospital is also being repainted and changes made in many directions, in- will result in better service and easier

agencies that contribute to the sup- pital, is the junior board of 254 mem- of Mrs. E. T. Negendank. The ladies are tireless in their efforts to assist and by means of social affairs, enter- tribute a very substantial sum toward it.

for 1922 show the amount of work e cared for 1,660; Treatments given in e performed 492; Babies born in hos- 525; Laboratory examinations 1,810. itution are: Joseph Bancroft, Presi- First Vice-President; Mrs. Charles F. ident; Mrs. Charles B. Holladay, Re- H. Beacom, Corresponding Secretary; Mrs. Helen T. Wiseheart, R. N.

#### **DELAWARE HOSPITAL**

89, The Delaware Hospital was opened 90.

according to a recent statement is- in every sense a hospital for the com- stood not only Wilmington, but all

pective of race, religion or ability to the people of the community for its micipal institution, or a private one

ard are entirely gratuitous and the e superintendent, nurses and regular enance for last year was \$138,500 and n, amounted to sixty thousand dollars. aree hundred thousand dollars."

the hospital is 155 beds and with an ll times. There are 45 student nurses, total staff of about 90 persons in all k of the institution.

ove \$150,000 annually and so far as in this city for labor, food, fuel and tained locally.

engages in extensive dispensary work, amed clinics: Surgical, Medical, Nose, ic, Neurological and Children's.

iven free treatment where necessary, argical dressings. The Social Service ss Mary Cook looks after the patients She investigates home conditions and homes wherein the person may have

proper environment and a chance to fully recover both health and usefulness.

Some idea of the scope of the work done by the institution may be gained from the following statistics for 1922. Patients cared for in hospital 2,848; Treatments given in Dispensary 10,885; Operations performed 1,263; Babies born in hospital 232; X-ray examinations in laboratory 2,494; ambulance trips 596.

The Junior Board of the hospital consisting of a large number of young women, takes care of the children's ward and the Ortho- paedic work, under the direction of Miss Alice Bush, President of the Board.

The officers of the institution are, John B. Bird, President; Benjamin F. Shaw, First Vice-President; Hon. Thomas F. Bayard, Second Vice-President; Charles W. Bush, Secretary; Townsend W. Miller, Treasurer, and Miss Caroline E. Sparrow, R. N. B. S., General Superintendent.

#### **PHYSICIANS' AND SURGEONS' HOSPITAL—WILMINGTON.**

This institution "was established on the principle of an open door hospital in which patients are permitted to have their own physician attend them." It opened its doors to receive patients in 1909.

It occupies a large brick building at Eighth and Adams streets and is thoroughly equipped in every particular to give real service to the public at all times.

There are up-to-date operating and X-Ray rooms, dispensary and laboratory in charge of a technician, in the person of Mrs. Jeanne Sala, formerly of New York, where she was in charge of the laboratory of one of the largest hospitals in the city.

In this laboratory are made the various analyses required by the attending physicians and surgeons, including blood count and research work of varied nature.

The hospital has a capacity of 50 beds with a total personnel of 40 persons including six nurses and ten student nurses, in charge of Miss Ella Derick, Superintendent, with Miss Katheryn H. Burke, as Assistant.

The Contagious Hospital is located at Chestnut and Rodney streets where it occupies an entire city block is a most important institution. It is under the direction of the same Board as the Adams Street hospital and fills a real need in the community.

This hospital permits the segregation of contagious diseases and is invaluable in preserving the city from possible epidemics. The hospital with a total personnel of eight and an ambulance service, is in charge of Miss Nellie Connolly, Superintendent.

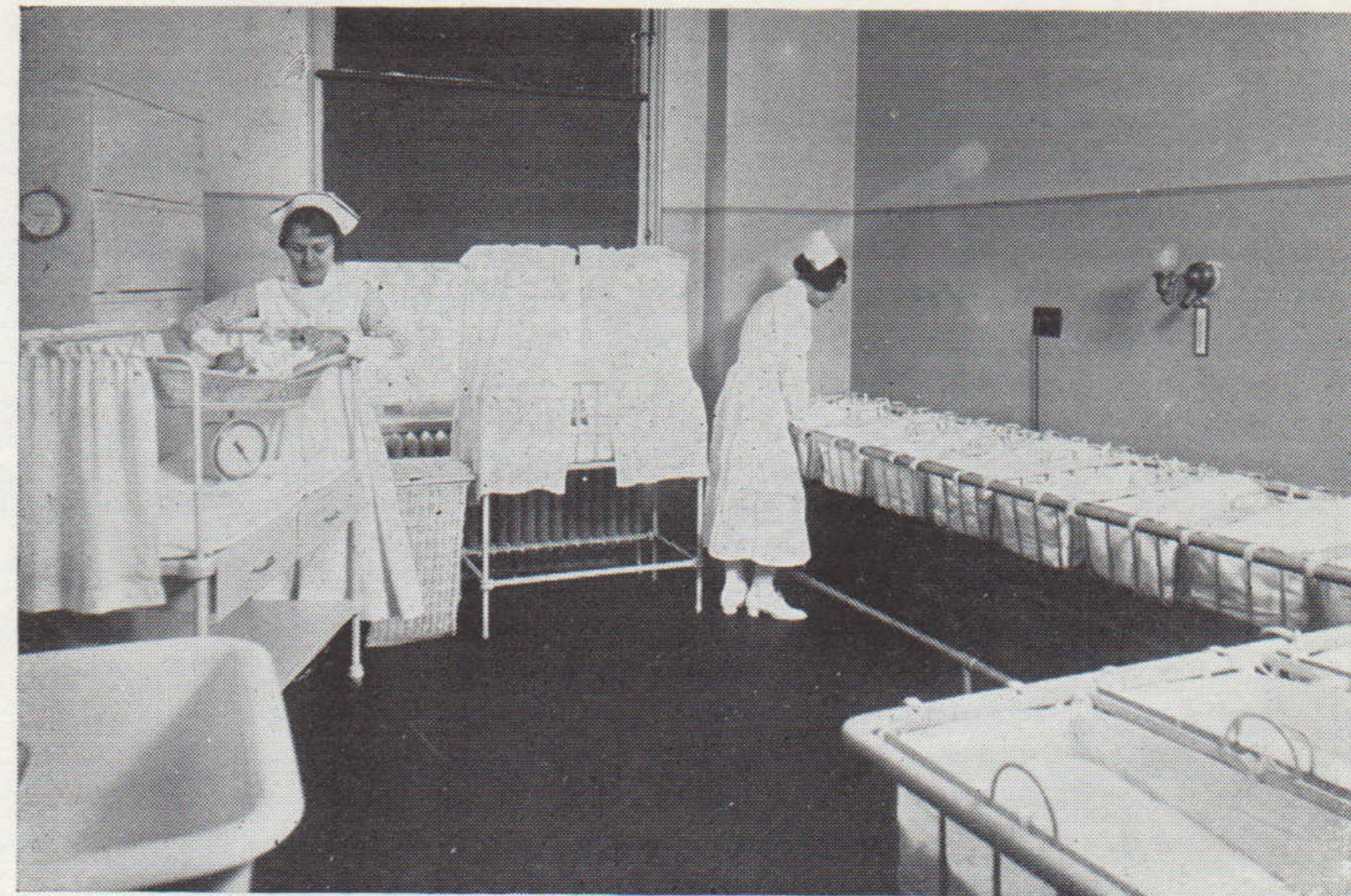
It is the intention of the management of the Physicians' and Surgeons' Hospital at some future time, to build on the Chestnut and Rodney Street site, so that both main buildings will occupy this ideal location.

The hospital has been a success from the beginning and stands as a monument to the efforts of those who were instrumental in its accomplishment and who are charged with the responsibility of its management and operation.

The remarkable progress made by the P. & S. Hospital is due to the generosity of a lady who has contributed most of the funds



**OPERATING ROOM MILFORD EMERGENCY HOSPITAL**



**SECTION OF MATERNITY WARD DELAWARE HOSPITAL**

that were necessary to build up this institution. While the donor prefers to remain anonymous, the hearts of the people who are benefited, go out to her in deep gratitude.

The officers are David Snellenburg, President; John A. Booker, Vice-President; J. B. Shellnut, Jr., Secretary and Treasurer.

The Medical Board is composed of Dr. Albert Robin, Chairman; Dr. Ira Burns, Secretary; Dr. Willard Smith; Dr. Edwin Bird; Dr. B. R. Veasey; Dr. Charles P. White; Dr. Charles Boehm.

#### **BABIES' HOSPITAL AND DAY NURSERY, WILMINGTON**

No institution in this city is doing a finer work nor deserving of heartier support than the Babies' Hospital and Day Nursery, both at Second and Washington and at 709 French Street, for colored children.

"It is a very fine work," says the annual report for 1922, "this caring for the little ones of the community, both white and colored, who otherwise might be so neglected as to be permanently afflicted or come to their grave almost before they had begun to live.

"Some have been brought to the hospital in such a state of undernourishment, with wasted limbs and pinched, suffering faces, that it would seem as though the Near East children could hardly offer examples of more pitiful need.

"Yet under the wise advice of the physicians and ministering care of the nurses even these have been brought back to health and happiness again. Such cases are not often the result of wilful neglect nor brutal indifference but usually of ignorance and poverty.

"The life of a tiny baby is at best precarious. Unable to tell of pains and sufferings or of the food that agrees or disagrees, experience on the part of doctors and nurses can alone discover a cure. So many mothers have no sort of notion of what is best to be done.

"A very few days of sickness is enough to bring the strongest infant to a state of serious and sometimes desperate weakness. The situation is bad enough when the parents are able to call in the most expert help and assistance, but when poverty will not permit this, nor the care of the household and perhaps other children make it impossible to give entire attention to such a little one this hospital holds out to the mother a place where she may look for help of an expert kind—and to the little child another chance of recovery and life. No lines are drawn as to creed or color. If the parents are able they are asked to make a small payment for treatment. If they are unable, the child is taken anyway."

The nursery department is very important as it is in charge of a competent nurse who constantly watches over the children left by mothers who work during the day. It is the duty of the nurse to amuse the children and give elemental kindergarten instruction. There is a regular time for lunch and dinner with a nap in between and the children who are admitted to the nursery have the benefit of expert supervision in every way.

Both the Washington and French Street institutions are governed by the same Board of Directors and Officers, as follows: Rt. Rev. Philip Cook, D. D., President; Rev. Frederick M. Kirkus, D. D., Vice-President; Hon. Charles M. Curtis, Secretary; Mrs. Robert Penington, Treasurer; Mrs. Mary E. Wright, Superintendent of Washington Street unit and Miss Elizabeth Yetman, Superintendent of French Street unit.